



# MORPHETTVILLE TOWNHOUSES

AVAILABLE  
THROUGH THE  
AFFORDABLE  
HOMES  
PROGRAM\*



## DARTFORD LOT 25

### AMBLESIDE PLACE

2 2 1

The suburb you've always known is transforming, and a fresh way of living is here.

With a focus on affordability, healthy living and smart design, Morphettville Townhouses bring together low-maintenance lifestyle and contemporary, designer spaces in this sought-after pocket of Adelaide. You'll have the time to do more, see more and enjoy more of a life well-lived.

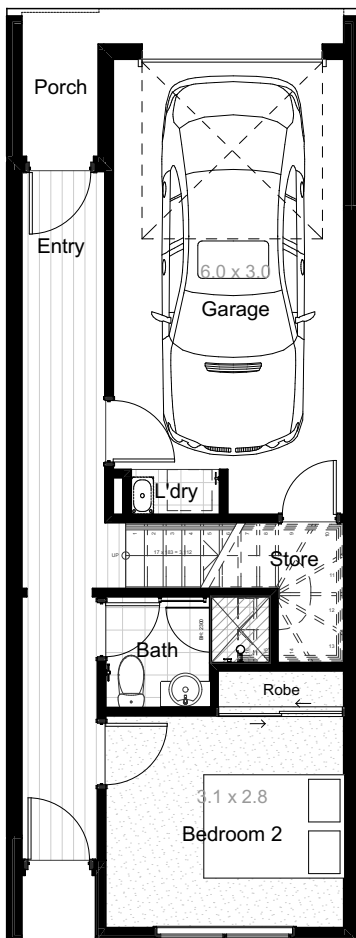
Only 8kms south-west of Adelaide, Morphettville Townhouses presents an ideal lifestyle between the city and sea, shops and cafes, parks and trails, connectivity and transport on your doorstep.

#### Features:

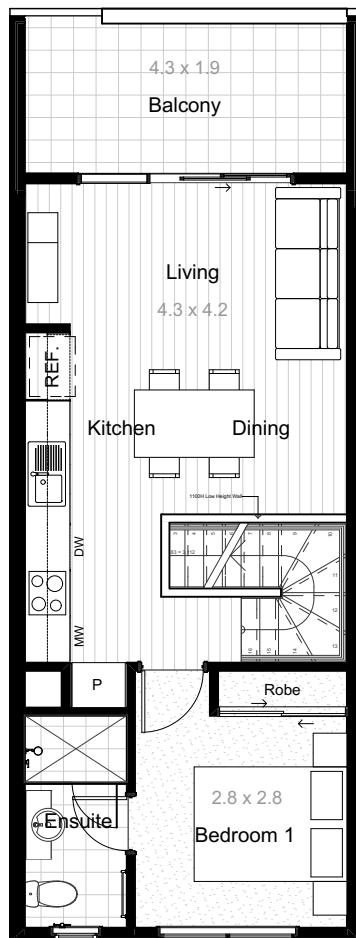
- 2.7m high ceilings
- Stainless steel appliances including dishwasher
- Quality flooring throughout
- Built in robes to all bedrooms
- Roller blinds
- Ample storage
- Irrigated landscaping
- Split system air conditioning
- Fencing, rainwater tank, clothesline and letterbox
- Paved paths and driveway
- NBN provision
- Choose between 2 internal colour schemes



1300 550 277  
LIVEMORPHETTVILLE.COM.AU



LOWER FLOOR



UPPER FLOOR

## DARTFORD

Living Ground	32.91m <sup>2</sup>
Living Upper	48.28m <sup>2</sup>
Garage	20.60m <sup>2</sup>
Balcony	9.86m <sup>2</sup>
Porch	1.91m <sup>2</sup>
Total	113.56m <sup>2</sup>

Lot 25 Land Size 66m<sup>2</sup>

**rivergum**  
homes



Government of  
South Australia

