



MORPHETTVILLE TOWNHOUSES

AVAILABLE
THROUGH THE
AFFORDABLE
HOMES
PROGRAM*



DARTFORD LOT 24

AMBLESIDE PLACE

2 2 1

The suburb you've always known is transforming, and a fresh way of living is here.

With a focus on affordability, healthy living and smart design, Morphettville Townhouses bring together low-maintenance lifestyle and contemporary, designer spaces in this sought-after pocket of Adelaide. You'll have the time to do more, see more and enjoy more of a life well-lived.

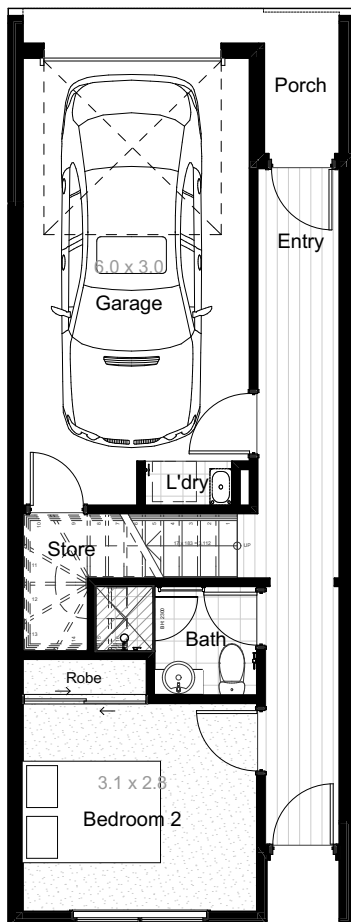
Only 8kms south-west of Adelaide, Morphettville Townhouses presents an ideal lifestyle between the city and sea, shops and cafes, parks and trails, connectivity and transport on your doorstep.

Features:

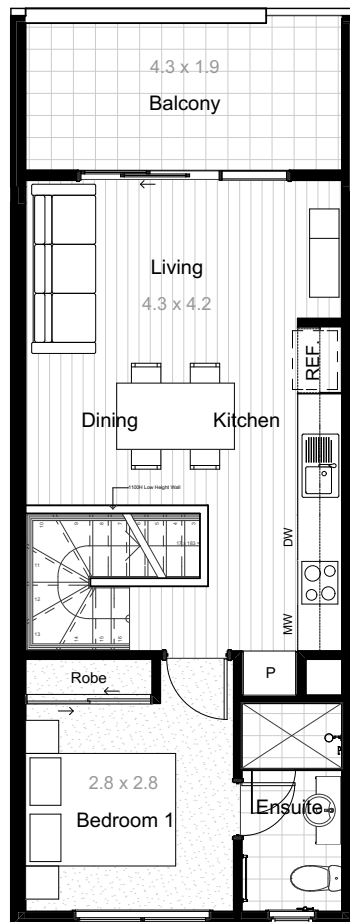
- 2.7m high ceilings
- Stainless steel appliances including dishwasher
- Quality flooring throughout
- Built in robes to all bedrooms
- Roller blinds
- Ample storage
- Irrigated landscaping
- Split system air conditioning
- Fencing, rainwater tank, clothesline and letterbox
- Paved paths and driveway
- NBN provision
- Choose between 2 internal colour schemes



1300 550 277
LIVEMORPHETTVILLE.COM.AU



LOWER FLOOR



UPPER FLOOR

DARTFORD

Living Ground	32.91m ²
Living Upper	48.28m ²
Garage	20.60m ²
Balcony	9.86m ²
Porch	1.91m ²
Total Living	113.56m ²

Lot 24 Land Size 66m²

rivergum
homes



Government of
South Australia

